

af-x uk product catalogue

date: 07/05/2021
version: 1.2

Table of Contents

article number	article	page
extinguishing units		
10-15-130-03-02	AF-X Fireblocker Nano CS	1
10-15-150-03-02	AF-X Fireblocker Nano CM	2
10-15-350-03-02	AF-X Fireblocker Nano BM	3
10-15-370-03-02	AF-X Fireblocker Nano BL	4
10-18-130-03-05	AF-X Fireblocker Carbon CS	5
10-18-150-03-05	AF-X Fireblocker Carbon CM	6
10-18-330-03-05	AF-X Fireblocker Carbon BS	7
10-18-350-03-05	AF-X Fireblocker Carbon BM	8
10-18-370-03-05	AF-X Fireblocker Carbon BL	9
control applications and associated materials		
21-10-460-00-01	Micro-FEP	10
21-10-450-00-01	DECU3 UK	11
21-10-361-00-01	AF-X MCU	12
21-10-465-00-01	Micro-ETB	13
schematic		
-	AF-X MCU / Sigma XT Diagram	14-15
detection & activation devices and associated articles		
23-30-843-00-00	Bimetal Switch 65°C	16
21-10-598-00-00	AF-X TEC Linear Heat Detection	17
23-40-415-00-00	Linear Heat Detection Cable	18
switches		
25-10-621-00-00	Maintenance Keyswitch	19
installation, projection & maintenance materials		
30-30-310-00-00	Test Lamp - Connector Hood	20
30-10-110-00-00	SS Bracket CS & CM	21
30-10-211-00-00	SS Bracket BS & BM & BL - 2mm	22
30-10-113-00-00	SS Bracket BS & BM & BL - 5mm	23
30-10-212-00-00	S Bracket BS & BM & BL - 2mm	24
30-20-129-00-00	Insulation Package - 3mm	25
30-20-130-00-00	Insulation Package - 6mm	25
30-30-300-00-00	Connector Hood	26
stickers & signs		
60-10-020-01-03	AF-X Sign (ZG)	27
60-20-021-01-03	AF-X Sticker (ZG)	27
60-20-030-01-03	AF-X Sticker for Electro and Switch Boxes	27

Model: AF-X Fireblocker Nano CS

Article: 10-15-130-03-02



GENERAL TECHNICAL INFORMATION

fire classes	A & B
activation mechanism	heating element 1.3 - 3.2 Ohm resistance
activation current	electric (6-36V D/C 1.0 A for 1-2 sec)
test recording current	max 40 mA (0.04 A) within 5 min

SPECIFICATIONS

gross weight	2.5 kg
weight extinguishing agent	150 g
discharge time	<30 sec
discharge openings	1
max. installation height	1.5 m
discharge length	1.5 m
dimensions (h x diameter)	31 x 9.4 cm
outflow temperature 75°C	<50 cm
outflow temperature 200°C	0 cm

PROTECTIVE REACH CONFORM ISO, EN & UL NORM

EN 2 Class of fire	net m³
A	2.6

Please note - In the design of the system one should always add a safety factor of 30%.

EXAMPLES OF APPLICATION AREAS

technical spaces	computer boxes electrical cabinets switch boxes
engine compartments	car bus train boat
machinery	CNC machines industrial machinery generators

Model: AF-X Fireblocker Nano CM
Article: 10-15-150-03-02



GENERAL TECHNICAL INFORMATION

fire classes	A & B
activation mechanism	heating element 1.3 - 3.2 Ohm resistance
activation current	electric (6-36V D/C 1.0 A for 1-2 sec)
test recording current	max 40 mA (0.04 A) within 5 min

SPECIFICATIONS

gross weight	3.5 kg
weight extinguishing agent	450 g
discharge time	<60 sec
discharge openings	1
max. installation height	1.5 m
discharge length	1.5 m
dimensions (h x diameter)	45 x 9.4 cm
outflow temperature 75°C	<150 cm
outflow temperature 200°C	0 cm

PROTECTIVE REACH CONFORM ISO, EN & UL NORM

EN 2 Class of fire	net m³
A	7.2

Please note - In the design of the system one should always add a safety factor of 30%.

EXAMPLES OF APPLICATION AREAS

rooms	ceiling floors
engine compartments	car bus train boat
large switch rooms	transformers control units cupboards

Model: AF-X Fireblocker Nano BM
Article: 10-15-350-03-02



GENERAL TECHNICAL INFORMATION

fire classes	A & B
activation mechanism	heating element 1.3 - 3.2 Ohm resistance
activation current	electric (6-36V D/C 1.0 A for 1-2 sec)
test recording current	max 40 mA (0.04 A) within 5 min

SPECIFICATIONS

gross weight	21 kg
weight extinguishing agent	2550 g
discharge time	<40 sec
discharge openings	1
max. installation height	5 m
discharge length	5 m
dimensions (h x w x d)	25 x 25 x 30.4 cm
outflow temperature 75°C	<150 cm
outflow temperature 200°C	<50 cm



PROTECTIVE REACH CONFORM ISO, EN & UL NORM

EN 2 Class of fire	net m³
A	42

Please note - to calculate the net space of a room, the space occupied by machinery or other fixed space occupying elements are to be deducted from the total (gross) space of the room.

Please note - In the design of the system one should always add a safety factor of 30%.

EXAMPLES OF APPLICATION AREAS

rooms	central control rooms computer rooms engine rooms plant rooms storage archive storage of hazardous goods
transport	shipping train aircraft

Model: AF-X Fireblocker Nano BL
Article: 10-15-370-03-02

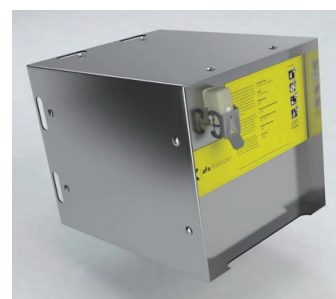


GENERAL TECHNICAL INFORMATION

fire classes	A & B
activation mechanism	heating element 1.3 - 3.2 Ohm resistance
activation current	electric (6-36V D/C 1.0 A for 1-2 sec)
test recording current	max 40 mA (0.04 A) within 5 min

SPECIFICATIONS

gross weight	19 kg
weight extinguishing agent	3900 g
discharge time	<61 sec
discharge openings	1
max. installation height	8 m
discharge length	6 m
dimensions (h x w x d)	25 x 25 x 30.4 cm
outflow temperature 75°C	<200 cm
outflow temperature 200°C	<150 cm
outflow temperature 400°C	<100 cm



PROTECTIVE REACH CONFORM ISO, EN & UL NORM

EN 2 Class of fire	net m³
A	72

Please note - to calculate the net space of a room, the space occupied by machinery or other fixed space occupying elements are to be deducted from the total (gross) space of the room.

Please note - In the design of the system one should always add a safety factor of 30%.

EXAMPLES OF APPLICATION AREAS

rooms	engine rooms plant rooms storage storage of hazardous goods
transport	shipping train aircraft

Model: AF-X Fireblocker Carbon CS
Article: 10-18-130-03-05



GENERAL TECHNICAL INFORMATION

fire classes	A & B
activation mechanism	heating element 6.1 - 7.5 Ohm resistance
activation current	electric (12-24V D/C 1.0 A for 1-2 sec)
test recording current	max 20 mA (0.02 A) within 5 min

SPECIFICATIONS

gross weight	2.7 kg
weight extinguishing agent	720 g
discharge time	<60 sec
discharge openings	1
max. installation height	3 m
discharge length	3 m
dimensions (h x diameter)	31 x 9.4 cm
outflow temperature 75°C	<100 cm
outflow temperature 200°C	<25 cm



PROTECTIVE REACH CONFORM ISO, EN & UL NORM

EN 2 Class of fire	net m³
A	5.5

Please note - In the design of the system one should always add a safety factor of 30%.

EXAMPLES OF APPLICATION AREAS

technical spaces	server cabinets electrical cabinets switch boxes
engine compartments	car bus train boat
machinery	CNC machines industrial machinery generators

Model: AF-X Fireblocker Carbon CM
Article: 10-18-150-03-05



GENERAL TECHNICAL INFORMATION

fire classes	A & B
activation mechanism	heating element 6.1 - 7.5 Ohm resistance
activation current	electric (12-24V D/C 1.0 A for 1-2 sec)
test recording current	max 20 mA (0.02 A) within 5 min

SPECIFICATIONS

gross weight	4.0 kg
weight extinguishing agent	1420 g
discharge time	<60 sec
discharge openings	1
max. installation height	6 m
discharge length	6 m
dimensions (h x diameter)	45 x 9.4 cm
outflow temperature 75°C	<100 cm
outflow temperature 200°C	<25 cm



PROTECTIVE REACH CONFORM ISO, EN & UL NORM

EN 2 Class of fire	net m³
A	11

Please note - In the design of the system one should always add a safety factor of 30%.

EXAMPLES OF APPLICATION AREAS

rooms	ceiling floors
engine compartments	car bus train boat
large switch rooms	transformers control units cupboards

Model: AF-X Fireblocker Carbon BS
Article: 10-18-330-03-05



GENERAL TECHNICAL INFORMATION

fire classes	A & B
activation mechanism	heating element 6.1 - 7.5 Ohm resistance
activation current	electric (12-24V D/C 1.0 A for 1-2 sec)
test recording current	max 20 mA (0.02 A) within 5 min

SPECIFICATIONS

gross weight	14.2 kg
weight extinguishing agent	4800 g
discharge time	<120 sec
discharge openings	1
max. installation height	4 m
discharge length	4 m
dimensions (h x w x d)	25 x 25 x 21.3 cm
outflow temperature 75°C	<200 cm
outflow temperature 200°C	<50 cm



PROTECTIVE REACH CONFORM ISO, EN & UL NORM

EN 2 Class of fire	net m³
A & B	36.8

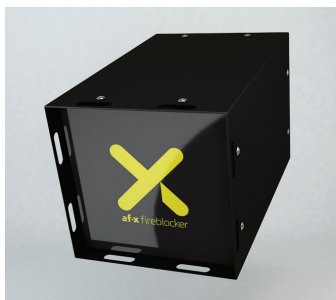
Please note - to calculate the net space of a room, the space occupied by machinery or other fixed space occupying elements are to be deducted from the total (gross) space of the room.

Please note - In the design of the system one should always add a safety factor of 30%.

EXAMPLES OF APPLICATION AREAS

rooms	central control rooms computer rooms engine rooms plant rooms storage archive storage of hazardous goods
transport	shipping train aircraft

Model: AF-X Fireblocker Carbon BM
Article: 10-18-350-03-05



GENERAL TECHNICAL INFORMATION

fire classes	A & B
activation mechanism	heating element 6.1 - 7.5 Ohm resistance
activation current	electric (12-24V D/C 1.0 A for 1-2 sec)
test recording current	max 20 mA (0.02 A) within 5 min

SPECIFICATIONS

gross weight	18.7 kg
weight extinguishing agent	9600 g
discharge time	<120 sec
discharge openings	1
max. installation height	6 m
discharge length	6 m
dimensions (h x w x d)	25 x 25 x 30.4 cm
outflow temperature 75°C	<200 cm
outflow temperature 200°C	<75 cm



PROTECTIVE REACH CONFORM ISO, EN & UL NORM

EN 2 Class of fire	net m³
A & B	73.6

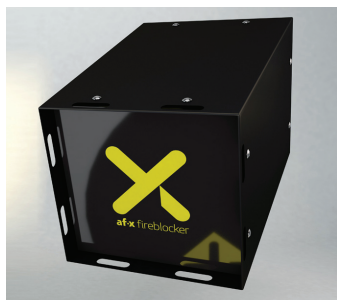
Please note - to calculate the net space of a room, the space occupied by machinery or other fixed space occupying elements are to be deducted from the total (gross) space of the room.

Please note - In the design of the system one should always add a safety factor of 30%.

EXAMPLES OF APPLICATION AREAS

rooms	central control rooms computer rooms engine rooms plant rooms storage archive storage of hazardous goods
transport	shipping train aircraft

Model: AF-X Fireblocker Carbon BL
Article: 10-18-370-03-05



GENERAL TECHNICAL INFORMATION

fire classes	A & B
activation mechanism	heating element 6.1 - 7.5 Ohm resistance
activation current	electric (12-24V D/C 1.0 A for 1-2 sec)
test recording current	max 20 mA (0.02 A) within 5 min

SPECIFICATIONS

gross weight	29.4 kg
weight extinguishing agent	14400 g
discharge time	<120 sec
discharge openings	1
max. installation height	8 m
discharge length	8 m
dimensions (h x w x d)	25 x 25 x 45.7 cm
outflow temperature 75°C	<200 cm
outflow temperature 200°C	<100 cm



PROTECTIVE REACH CONFORM ISO, EN & UL NORM

EN 2 Class of fire	net m³
A & B	110

Please note - to calculate the net space of a room, the space occupied by machinery or other fixed space occupying elements are to be deducted from the total (gross) space of the room.

Please note - In the design of the system one should always add a safety factor of 30%.

EXAMPLES OF APPLICATION AREAS

rooms	central control rooms computer rooms engine rooms plant rooms storage archive storage of hazardous goods
transport	shipping train aircraft

Micro-FEP

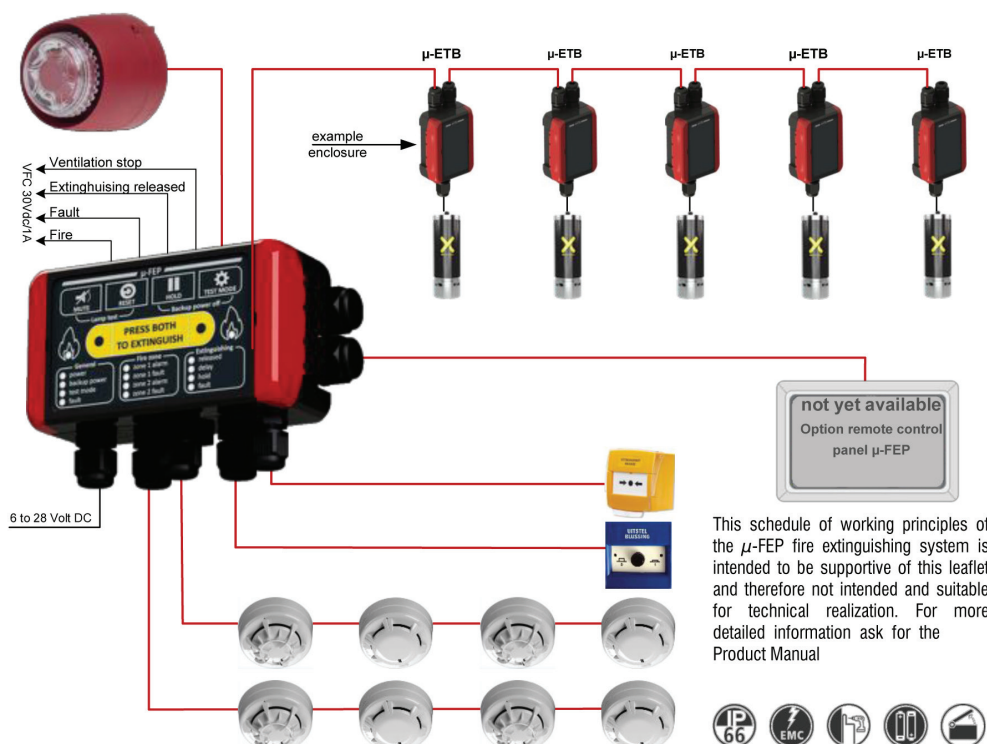
Article: 21-10-460-00-01



TECHNICAL INFORMATION

Micro-FEP	fire alarm, detection and extinguishing panel
IP rating	IP66
ambient temperature range	-10 to 50 degrees Celsius
dimensions (h x w x d)	80 x 151 x 60 mm
mains supply	6 to 28 Volt DC
backup power duration	typically, 3 hours in idle state
extinguishing current	between 1.3 and 1.6 A
extinguisher release pulse length	between 50 and 55 ms
end of line component	diode with anode connected to + connection
advised diode	1N5400, RL201, SF21
max. extinguisher count	5 connected in series
terminal capacity	0.5mm ² to 1.5mm ² solid or stranded wire

Please note - this panel is only suitable for the AF-X fireblocker nano series



DECU3

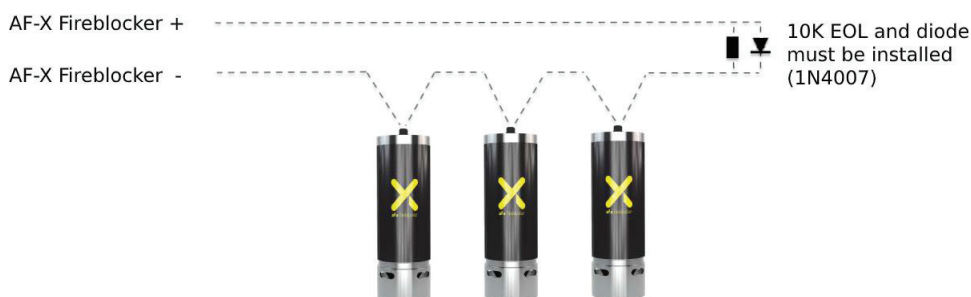
Article: 21-10-450-00-01



TECHNICAL INFORMATION

DECU3	detection and extinguishing panel
IP rating	IP65
dimensions (h x w x d)	80 x 120 x 57 mm
mains supply	11 to 32 Volt DC
extinguishing current	1A to 4A depending on voltage and number of suppressors (1.2 – 3.6 Ohms nominal each unit), up to 2 units on 12V, 3 units max on 24V
end of line resistor	10k Ohm
end of line diode	1N4004 up to 1N4007
alarm	when short circuit, open circuit, battery fault, fire detection and extinguishing

AF-X Fireblocker generators wired in series
 - input voltage 12Vdc, max 2 generators
 - input voltage 24Vdc, max 3 generators



AF-X MCU (Monitoring & Control Unit)

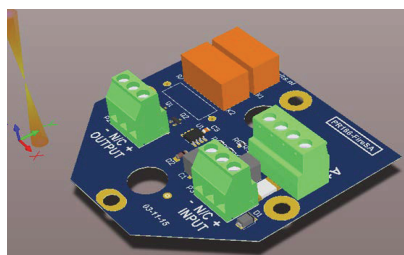
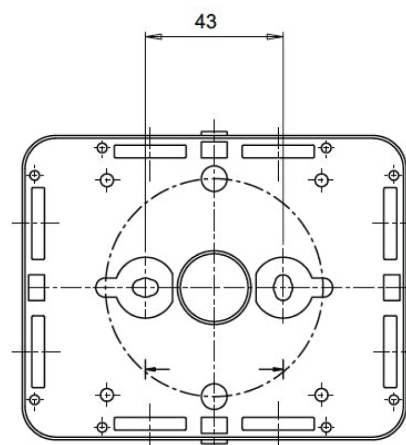
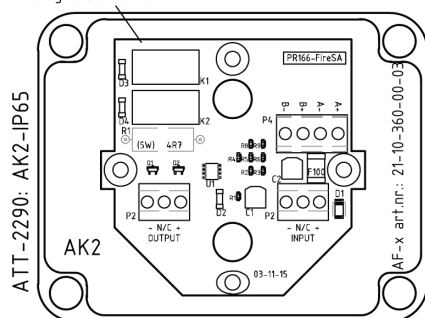
Article: 21-10-361-00-01



TECHNICAL INFORMATION

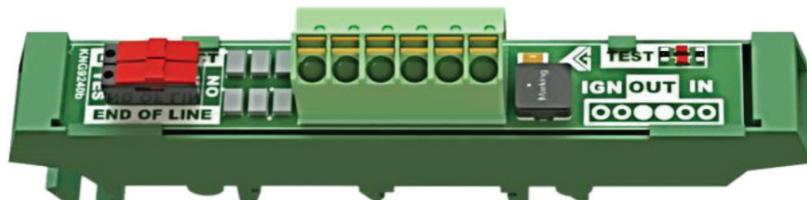
dimensions (h x w x d)	95 x 120 x 45 mm
material	plastic (halogen free)
protection rate	IP65
cable capacity	0.5mm ² to 2.5mm ²
input delay time	500 milliseconds +/- 100 milliseconds
output duration	1 second +/- 400 milliseconds
end of line resistor	- 10K with AF-X TEC & S-TEC - 6K8 with RP1r-SUPRA (Notifier)
end of line diode	- 1N4004 with Kentec XT

AF-X Monitoring & Control Unit



Micro-ETB (Extinguisher Terminal Board)

Article: 21-10-465-00-01

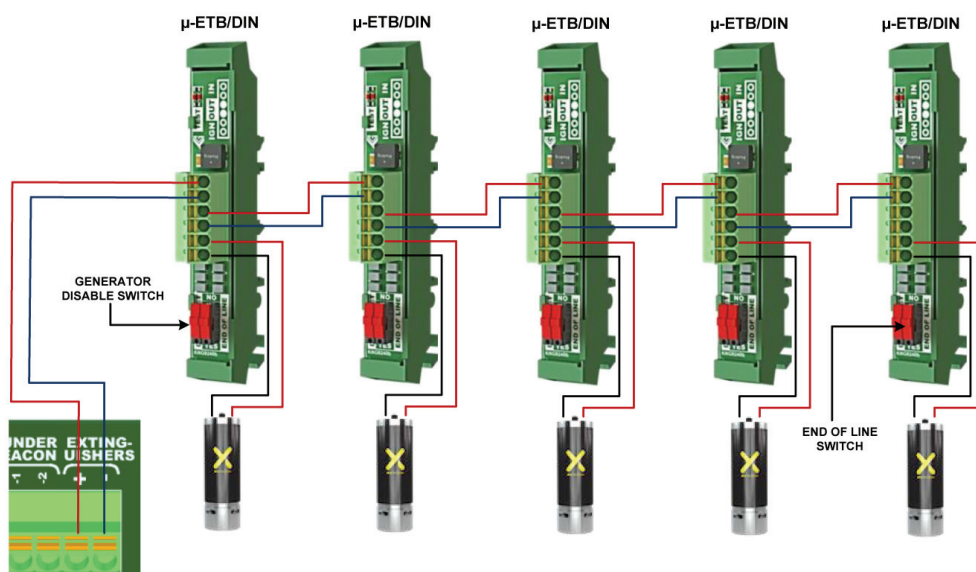


TECHNICAL INFORMATION

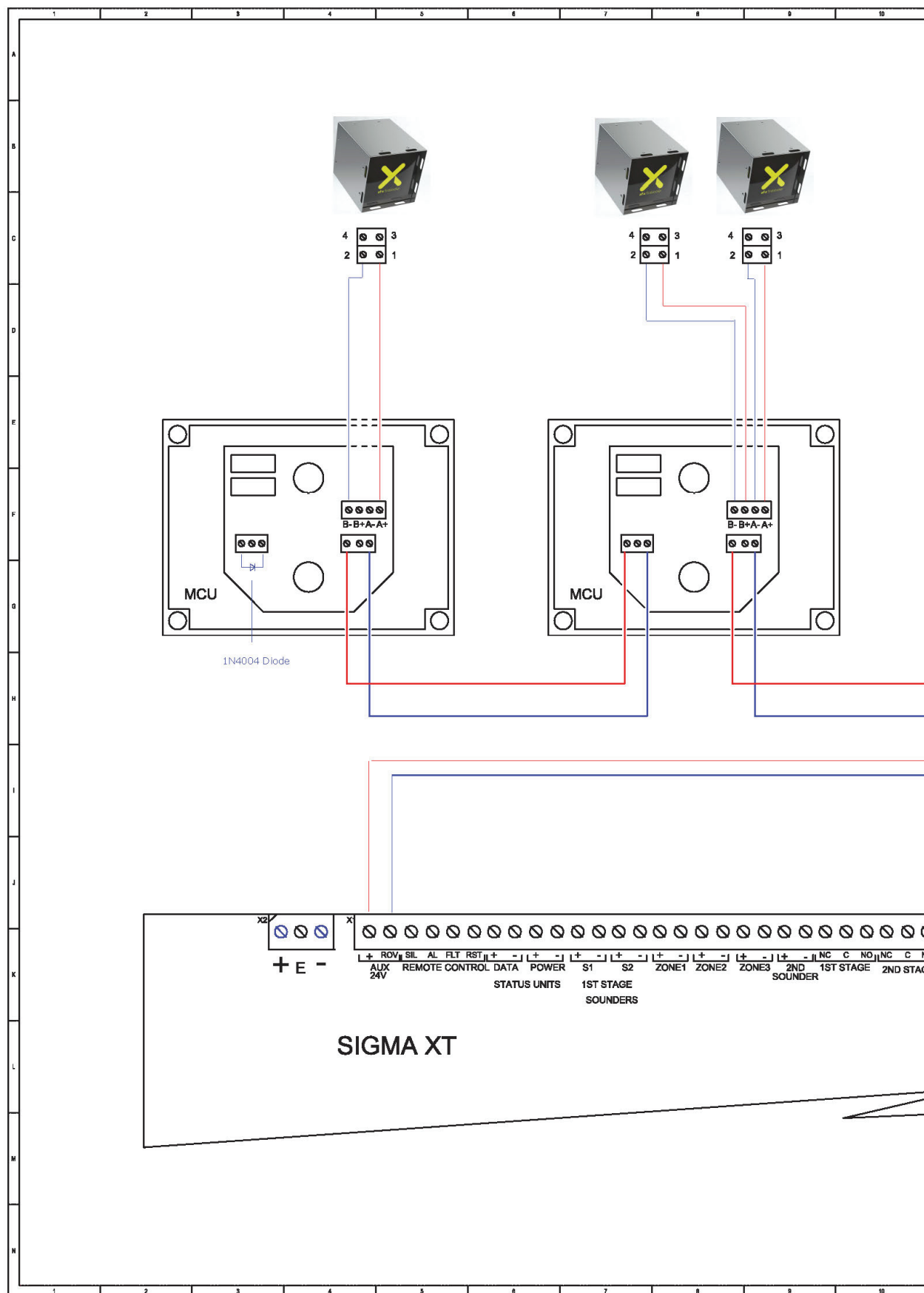
dimensions (h x w x d)	65 x 120 x 95 mm
material	plastic (halogen free)
protection rate	IP65
cable capacity	0.5mm ² to 1.5mm ²
duration ignition current	50 milliseconds

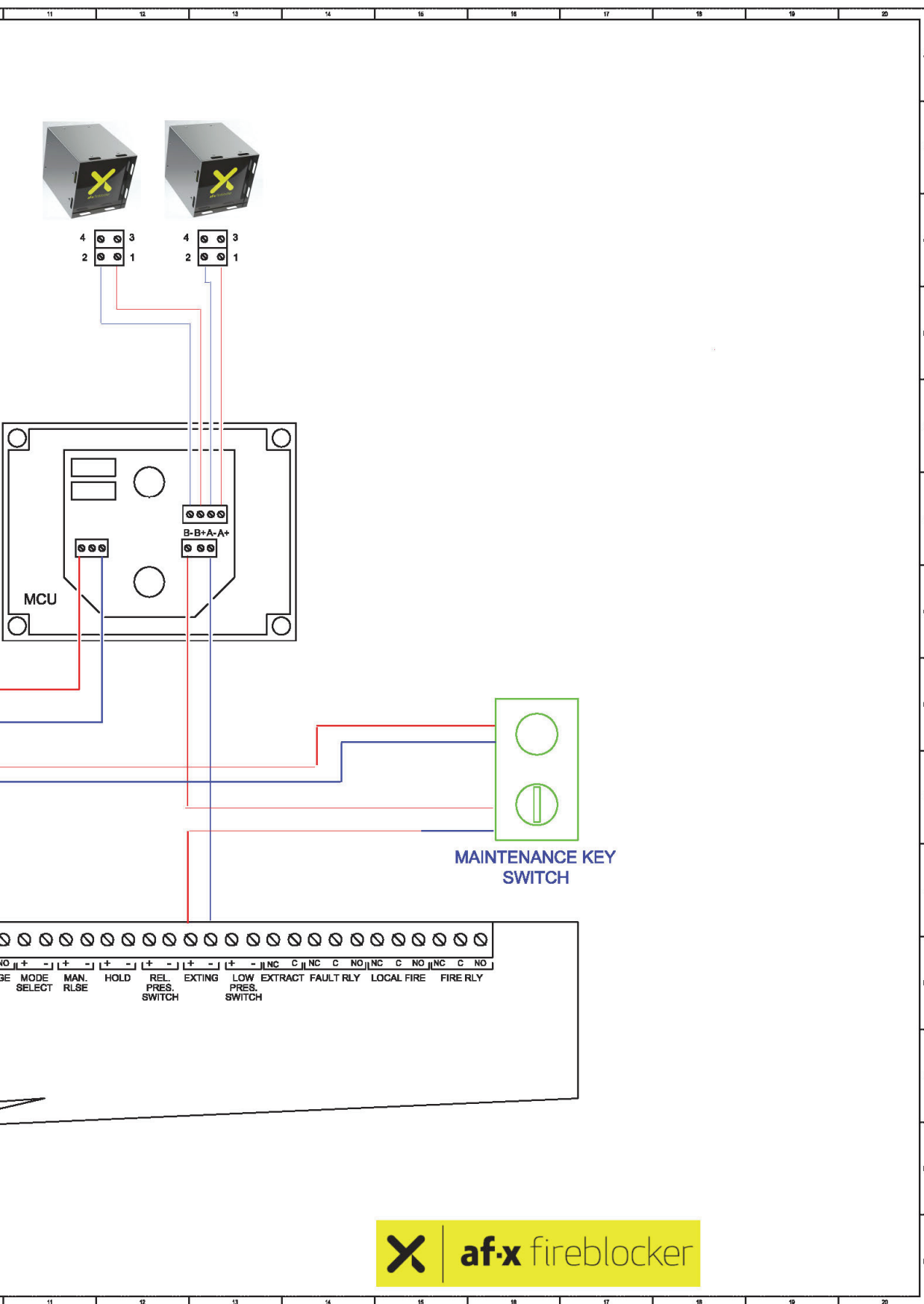


- easy connection through push connection
- a bridging protection ensures that the ignition current flows through ALL electrical activators for at least 50 ms, also when one of the igniters is malfunctioning or behaving differently than others (eg. igniting sooner) and going in high impedance before other igniters are ignited)
- the μ -ETB is equipped with a switch that activates the end-line monitoring diode at the last extinguishing generator
- a second switch is intended to disconnect the electrical activator from the extinguishing line for the purpose of testing the extinguishing line without activating the extinguishing generators
- there is a red test LED that shows that an activation current is actually being initiated during the installation test
- the μ -ETB is equipped with reverse polarity protection, thereby avoiding connection errors
- the μ -ETB is equipped with surge protection, which reduces the risk of activation of a fire generator near a lightning strike



Schematic AF-X MCU / Kentec Sigma XT





Bimetal Switch

Article: 23-30-843-00-00



GENERAL TECHNICAL INFORMATION

switch version	normally open
switching current	2.0 A / 1.6 A
number of circuits	7000
maximum switching current	4 A
number of circuits max.	3000
power activation temperature	65°C

Certified: UL 2111 / UL 873

BATTERY

technology	lithium
type	CR17335E-R
dimensions (h x diameter)	25.2 x 14.5mm
nominal capacity	1600 mAh
standard discharge current	5 mA
nominal voltage	3.0 V
max. pulse current	2500mA
operating temperature	-40 ~ +85°C

AF-X TEC Linear Heat Detection

Article: 21-10-598-00-00

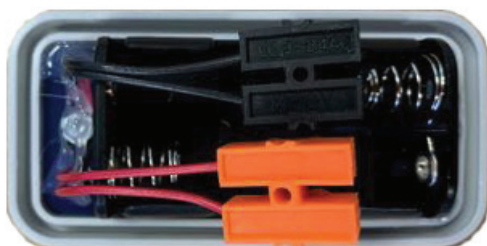


TECHNICAL INFORMATION

AF-X TEC	thermal detection and activation unit
main power	2 x 1.5 VDC battery AA
automatic control and alarm	when wire breakage, fire detection and low battery
alarm visual	LED on panel
alarm acoustic	buzzer on panel 3KHz / 80dB
detection zones	1
extinguishing output	suited for 1 x AF-X Fireblocker
dimensions (h x w x d)	85 x 44 x 38 mm
detection	maximum length LHD without EOL = 2.5 m maximum length LHD with EOL (10K ohm) = 10 m

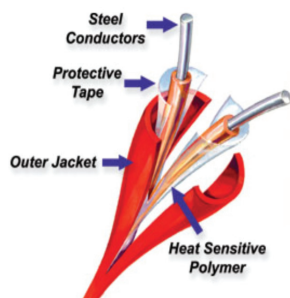
*Only suitable for the AF-X Fireblocker nano series

- 2 x AA
- Orange connection for AF-X Fireblocker
- Black connection for LHD



Protectowire Linear Heat Detector

Article: 23-40-415-00-00 | 23-40-416-00-00 | 23-40-418-00-00



TECHNICAL INFORMATION

max. voltage range	30 VAC 42VDC
min. bend radius	6.4 cm
switching current	2.0 A
weight per metre	0.025 kg
max. length	100 m
diameter	4 mm
temperature range	between 68 and 180°C
end of line diode	maximum length LHD without EOL = 2.5 m maximum length LHD with EOL (10K ohm) = 100 m

TYPE EPC – VINYL JACKET



PHSC-155-EPC 155° (68°C)

Max. Recommended Ambient Temp 115° F (46° C)



PHSC-190-EPC 190° (88°C)

Max. Recommended Ambient Temp 150° F (66° C)



PHSC-220-EPC 220° (105°C)

Max. Recommended Ambient Temp 175° F (79° C)



PHSC-280-EPC 280° (138°C)

Max. Recommended Ambient Temp 200° F (93° C)



PHSC-356-EPC 356° (180°C)

Max. Recommended Ambient Temp 221° F (105° C)

AF-X Maintenance Keyswitch

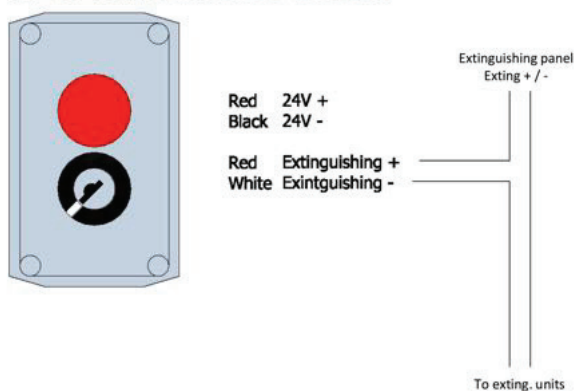
Article: 25-10-621-00-00



TECHNICAL INFORMATION

main power	24V
visual LED	on = system in maintenance & AF-X Fireblockers are disconnected off = system is active
dimensions (h x w x d)	105 x 65 x 55 mm

AF-X Maintenance Switch



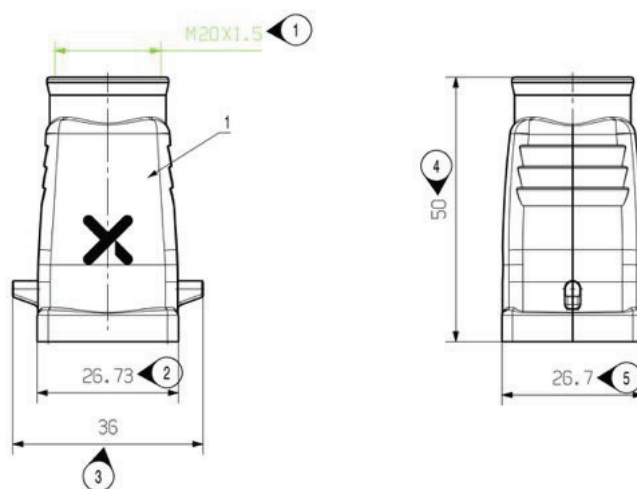
Test Lamp Connector Hood

Article: 30-30-310-00-00

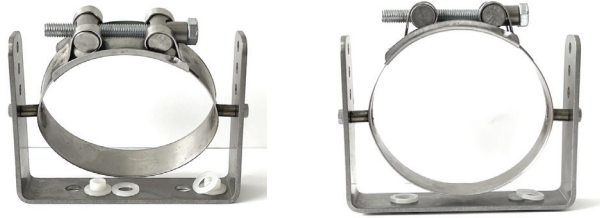


TECHNICAL INFORMATION

test lamp connection	Fireblocker simulator
lamp connection	inlay female (male is on the cable connector hood)
dimensions (h x w x d)	pole 1 & 2 80 x 27 x 27 mm

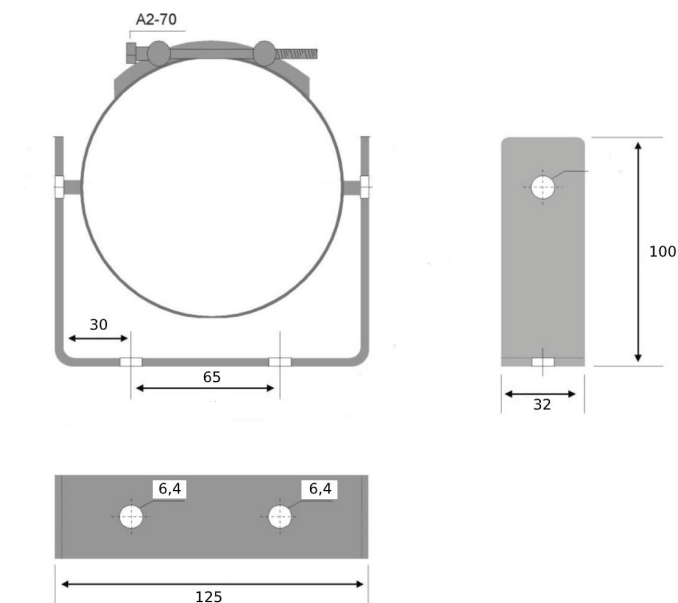


SS Bracket CS & CM
Article: 30-10-110-00-00

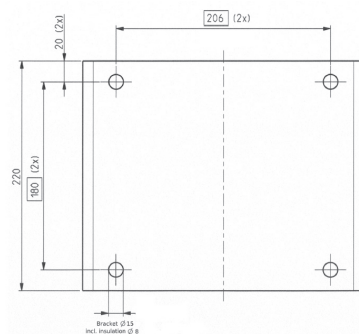
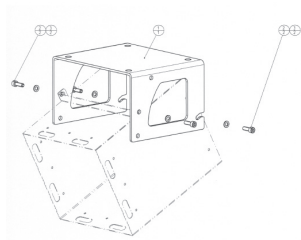
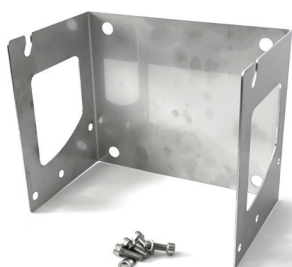


TECHNICAL INFORMATION

material	stainless steel 316
AF-X Fireblocker	Nano CS, Nano CM, Carbon CS & Carbon CM
Nano CS & Carbon CS	1 bracket needed
Nano CM & Carbon CM	2 brackets needed
insulation ring	nylon 6
insulation sliding bearing	nylon 66
height suspension	adjustable H-52/92 mm



SS Bracket 5 mm Nano BM & Nano BL
Article: 30-10-113-00-00



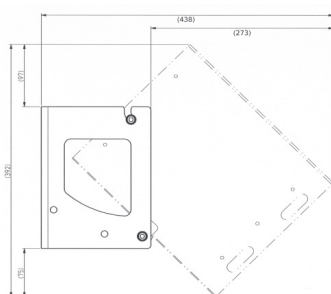
TECHNICAL INFORMATION

*this 5 mm thick bracket must be used in non-static environments

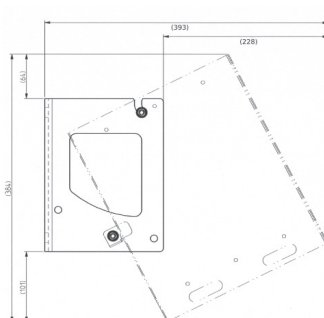
material	stainless steel 316 (5 mm thick)
AF-X Fireblocker	Nano BM & Nano BL
dimensions (h x w x d)	22 x 26.4 x 16.2 cm
projection angles ceiling	0, 27 & 45 degrees
projection angles wall	45, 63 & 90 degrees
amount of bolts	4 x (DIN 912)
wall connection Ø	15 mm (4x)
wall connection Ø with insulation package	8 mm (4x)

*use insulation pack with metal substrate

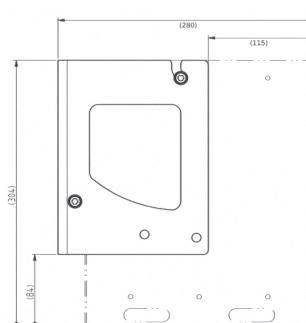
wall 45 degrees



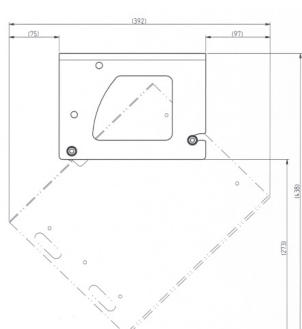
wall 63 degrees



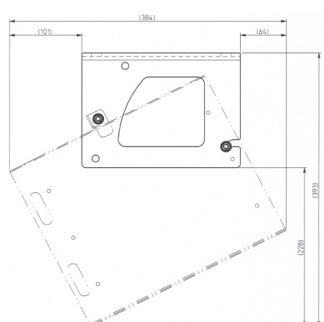
wall 90 degrees



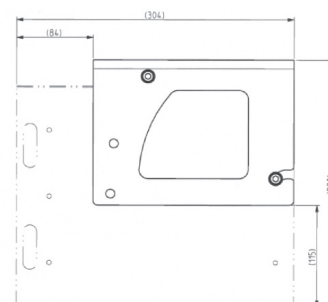
ceiling 45 degrees



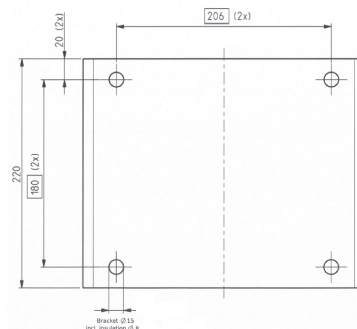
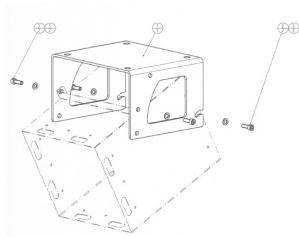
ceiling 27 degrees



ceiling 0 degrees



S Bracket Carbon BS, BM & BL
Article: 30-10-212-00-00

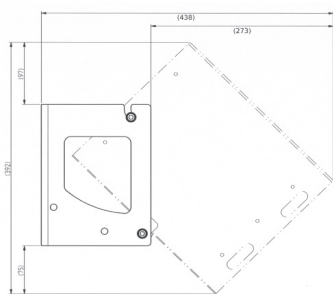


TECHNICAL INFORMATION

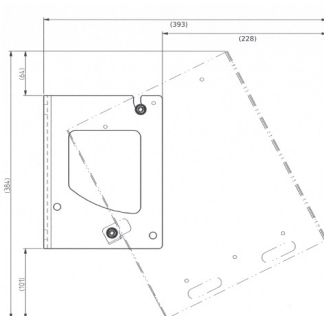
material	black coated steel (2 mm thick)
AF-X Fireblocker	Carbon BS, Carbon BM & Carbon BL
dimensions (h x w x d)	22 x 26.4 x 16.2 cm
projection angles ceiling	0, 27 & 45 degrees
projection angles wall	45, 63 & 90 degrees
amount of bolts	4 x (DIN 912)
wall connection	15 mm (4x)
wall connection with insulation package	8 mm (4x)

*use insulation pack with metal substrate

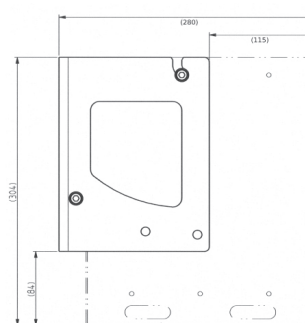
wall 45 degrees



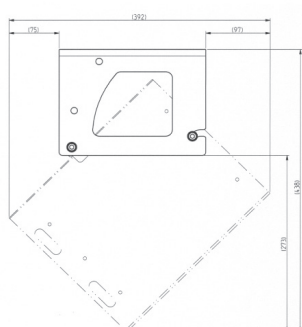
wall 63 degrees



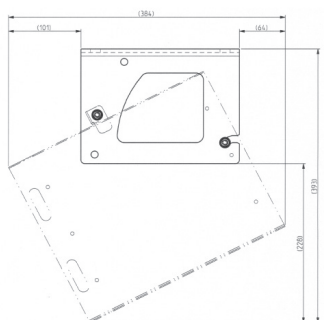
wall 90 degrees



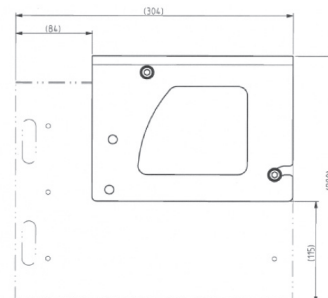
ceiling 45 degrees



ceiling 27 degrees

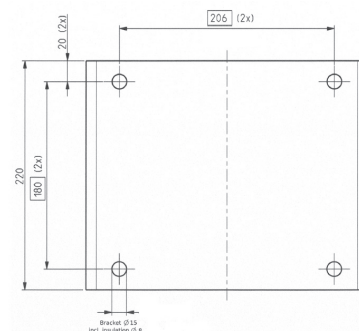


ceiling 0 degrees



Insulation Package

Article: 30-20-129-00-00 (3 mm) | 30-20-130-00-00 (6 mm)



TECHNICAL INFORMATION

material

polyethene

material sliding bearing

nylon 66 (per insulation pack 4pcs)

dimensions (h x w x d)

215 x 258 x (3 & 6) mm

wall connection \varnothing with insulation package

8 mm (4x)

3 mm thick suitable for

5 mm thick bracket: 30-10-113-00-00

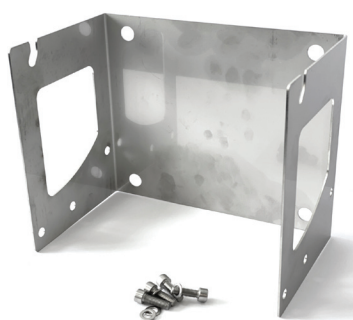
6 mm thick suitable for

2 mm thick bracket:

30-10-211-00-00 & 30-10-212-00-00

*use insulation pack with metal substrate

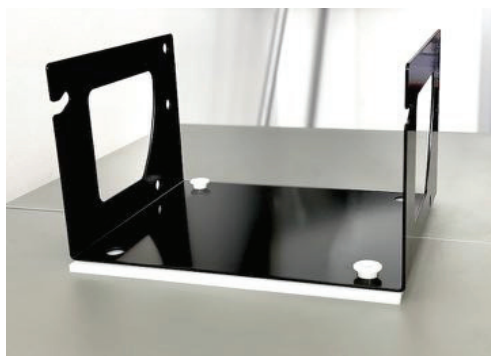
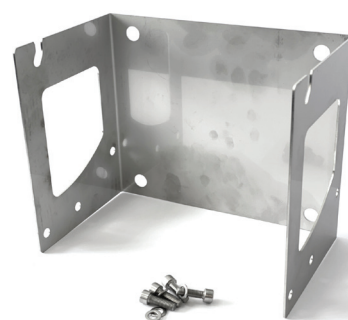
6 mm suitable for: 30-10-211-00-00



6 mm suitable for: 30-10-212-00-00

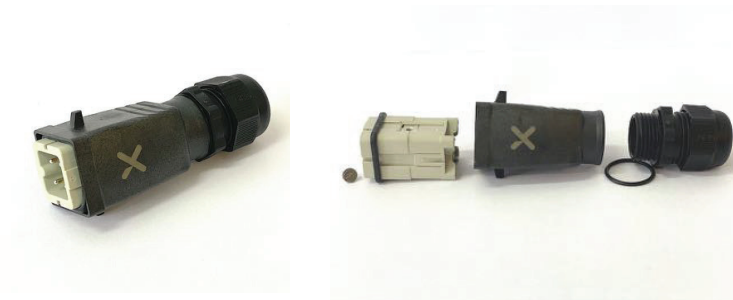


3 mm suitable for: 30-10-113-00-00



Connector Hood

Article: 30-30-300-00-00



TECHNICAL INFORMATION

**connector hood
parts**

cable connection for AF-X Fireblocker

1. inlay male (female is on the AF-X Fireblocker)

2. hood

3. gland

cable connection

Pole 1 & 2

cable size

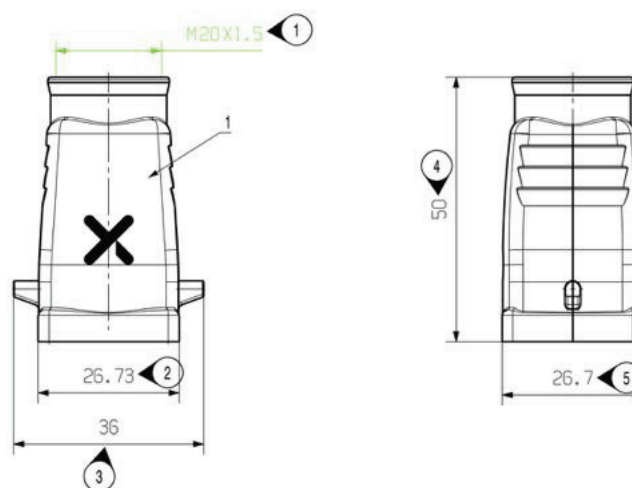
6 - 13 mm

IP rating

IP65

dimensions (h x w x d)

77 x 27 x 27 mm



AF-X Stickers & Signs

Article: 60-10-020-01-03 | 60-10-021-01-03 | 60-10-030-01-03



TECHNICAL INFORMATION

sticker	aerosol information & instruction sticker for on doors
article number	60-20-021-01-03
dimensions (h x w)	105 x 148 mm (A6)
sticker	aerosol information & instruction sticker for on objects (e.g. switchbox)
article number	60-20-030-01-03
dimensions (h x w)	105 x 148 mm (A6)
sign	aerosol information & instruction sign for on doors
article number	60-20-030-01-03
dimensions (h x w)	148 x 210 mm (A5)



af-x fireblocker (uk) ltd
Cranmore Place, Cranmore Drive, Solihull, B90 4RZ

tel: 0330 055 3413
email: info@af-xfireblocker.co.uk
web: www.af-xfireblocker.co.uk